



This document has been developed in order to clarify the current escalation of concerns process. To clarify roles and responsibilities in relation to specific issues where there has been the potential for confusion amongst stakeholder representatives involved in postgraduate medical & dental education within UCLPartners and the Local Education Training Board (LETB) known as Health Education North Central & East London (HE NCEL).

The document aims to clarify roles and responsibilities within the following areas;

1. Escalation of any issue affecting postgraduate medical & dental education for UCLPartners commissioned specialty training programmes
2. Roles and responsibilities in the event of a Pan-London Quality and Regulation Unit organised visit taking place
3. Roles and responsibilities in the event of the commissioning of posts
4. Roles and responsibilities in the event of the decommissioning of posts

This is a summary of the current roles and responsibilities as outlined by HE NCEL as commissioners of education via UCLPartners as Lead Provider.

Contacts for UCLPartners and HE NCEL decision levels found within the escalation process can be found through the following links;

[UCLPartners Education](#) (TPMC Chairs, TPDs and Trainee Representatives via the [Specialties](#) page)

[HE NCEL](#)

Full details of the quality visit, commissioning and decommissioning processes can be found through the following links;

[Quality Visits](#)

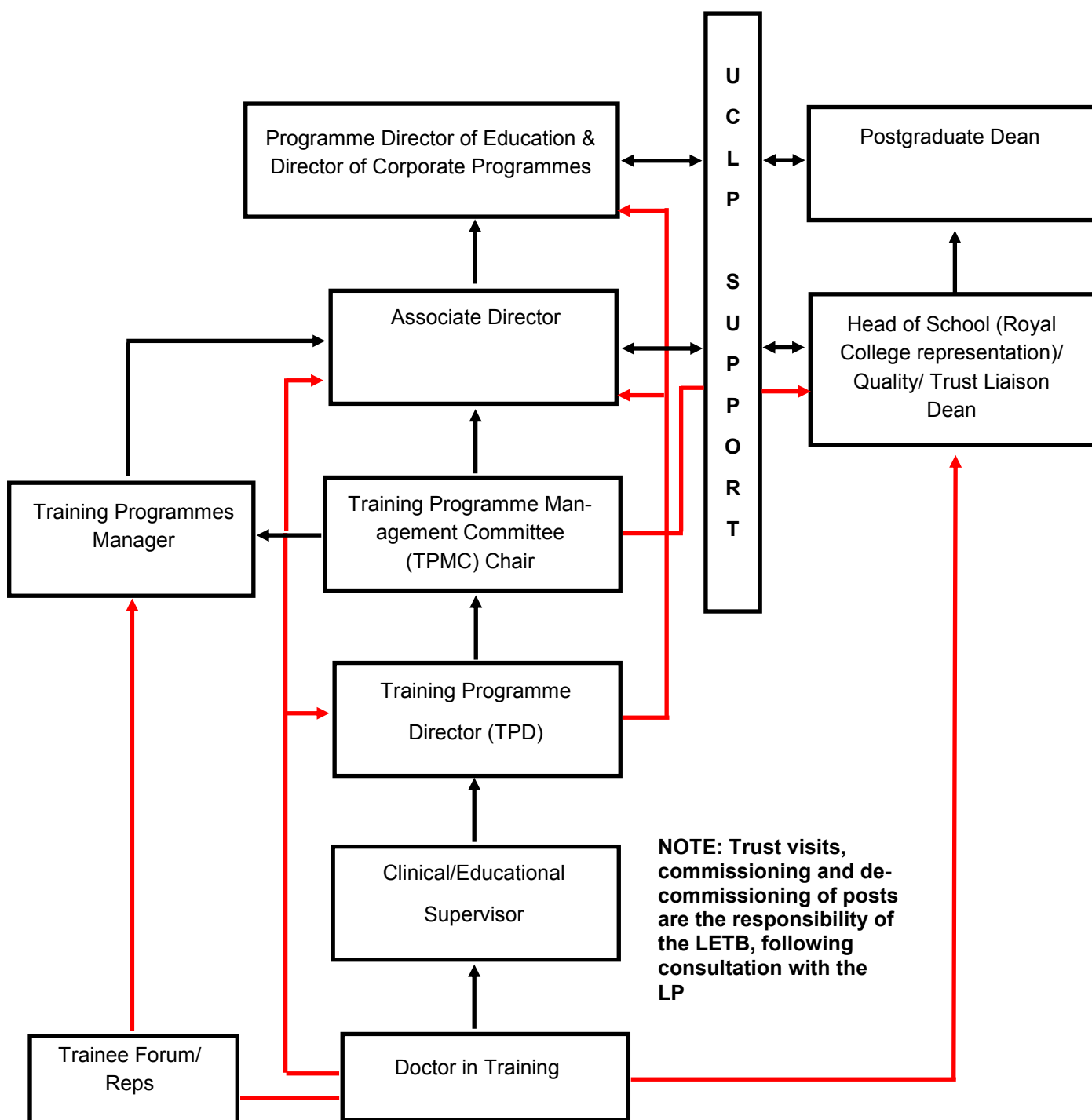
[Commissioning](#)

[Decommissioning](#)

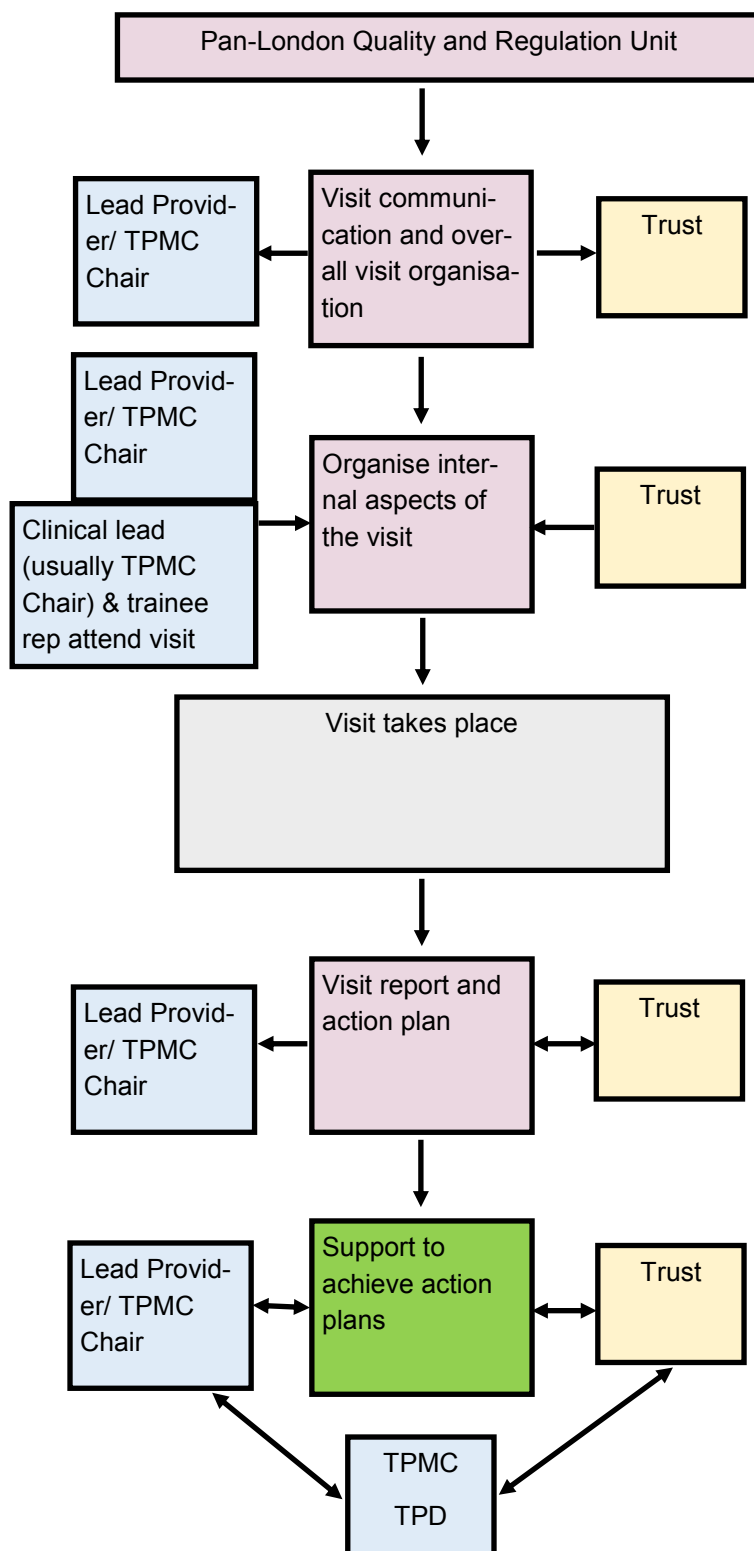
1. Escalation of any issue affecting postgraduate medical & dental education for UCLPartners commissioned specialty training programmes

This escalation process is to be followed by all parties listed here and is applicable to issues which include, but are not limited to, clinical work, training programme & educational concerns, curriculum concerns, bullying or undermining. By following this pathway issues could be resolved before they reach the next decision level. UCLPartners as Lead Provider aims to reconcile all issues (where possible) within a supportive environment before they reach the Head of School or Postgraduate Dean.

Urgent matters can be escalated to subsequent decision levels as required.



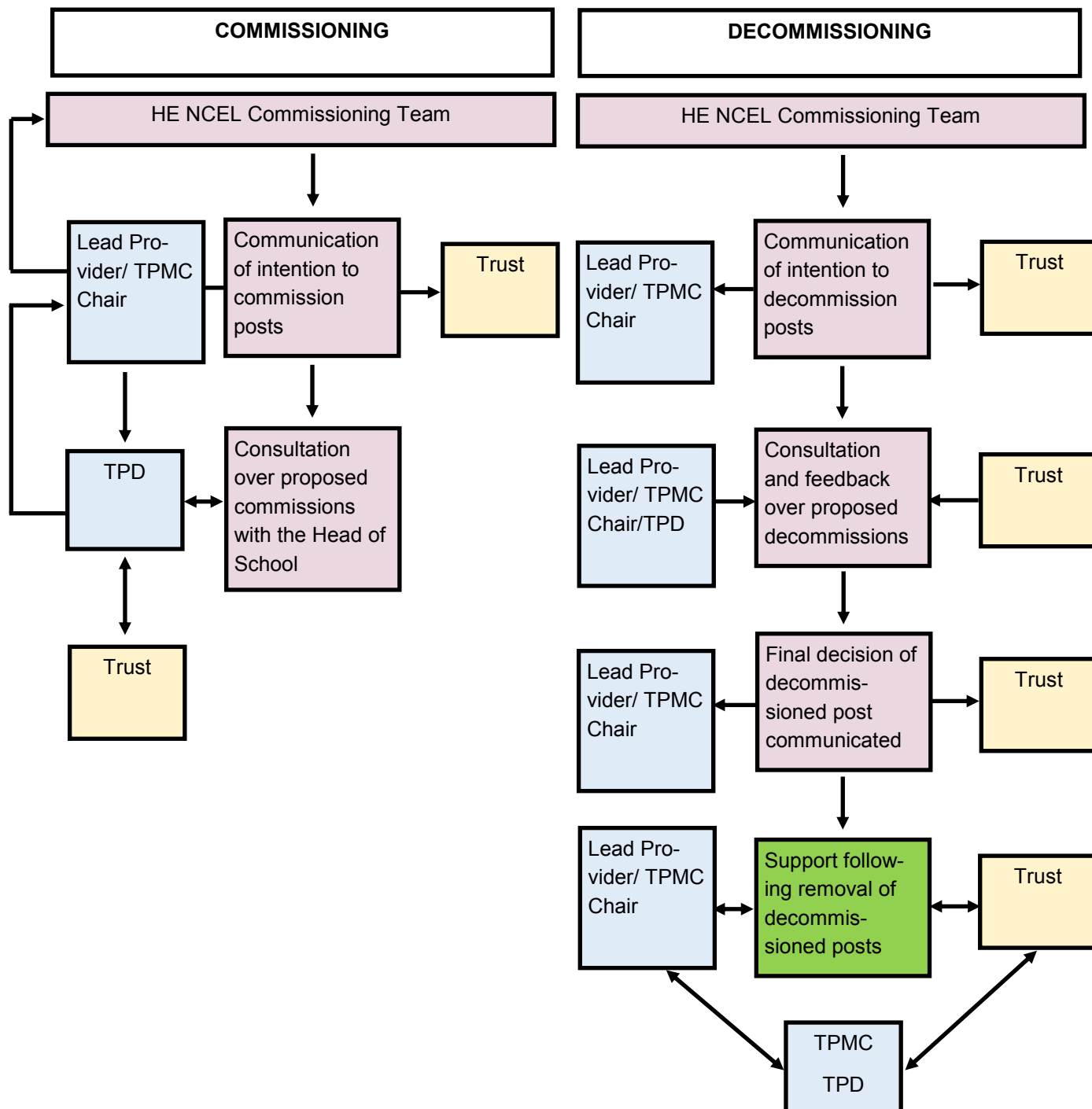
2. Roles and responsibilities in the event of a Pan-London Quality and Regulation Unit organised visit taking place



NOTE: Trust visits, commissioning and decommissioning of posts are the responsibility of the LETB, following consultation with the LP

3. Roles and responsibilities in the event of the commissioning of posts

4. Roles and responsibilities in the event of the decommissioning of posts



NOTE: Trust visits, commissioning and decommissioning of posts are the responsibility of the LETB, following consultation with the LP